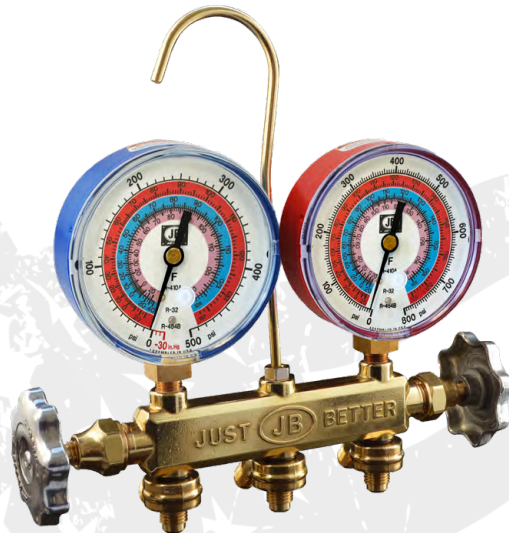




REPAIR PARTS

Our American-made tools are built tough and built to last. Unlike others, they can be repaired and even rebuilt with easy-to-find parts and basic tools, so you can count on a lifetime of use from your investment.



CONTENTS

PLATINUM AC Vacuum Pump Repair: DV-42N through DV-285N Series	2
PLATINUM BEAST DC Vacuum Pump Repair: DV-340N	3
PLATINUM PRO DC Vacuum Pump Repair: DV-240DC and DV-285DC	4
ELIMINATOR DC Vacuum Pump Repair: DV-6EDC	5
ELIMINATOR AC Vacuum Pump Repair: DV-3E, DV-4E and DV-6E Series	6
Mainfold Rebuild Kits:	
ZEPPELIN Brass Series	7
ZEPPELIN 2-Valve Aluminum Series	7
ZEPPELIN 4-Valve Aluminum Series	7
M2 Series	8
PATRIOT 2-Valve Brass Series	8
REVOLVER 4-Valve Ball Valve Series	8
O-Rings/Gaskets	9
Hose Replacement Parts	9
A2L Hose Adapters	9
Secure Seal Hose Adapters	9
CLSX Series Hose Repair Instructions	10
CLS Series Hose Repair Instructions	10

JUST BETTER.

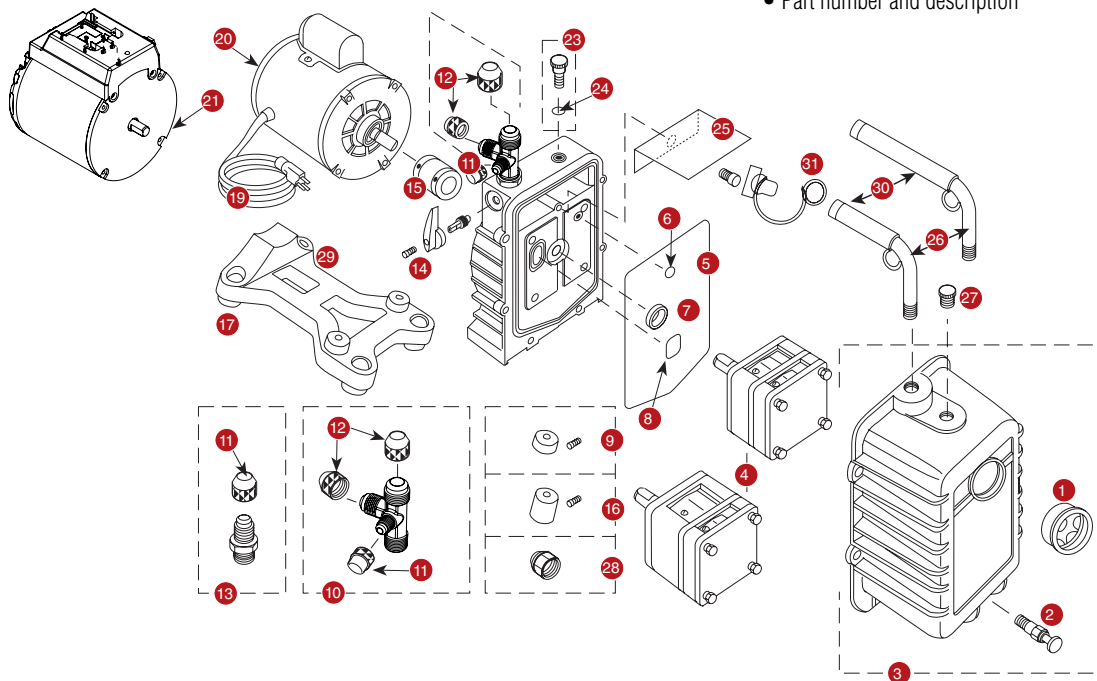


Proudly American Made

PLATINUM® AC Vacuum Pump Repair: DV-42N through DV-285N Series

Repair parts can be ordered from your local JB wholesaler. When ordering, please provide the following information:

- Model number
- Serial number
- Part number and description



PLATINUM® SERIES REPAIR PARTS – ALL MODELS		
REF.NO.	PART NO.	DESCRIPTION
1	PR-1	Sight glass
2	PR-2	Drain valve
6	PR-211	Trap o-ring, gas ballast
7	PR-3	Shaft seal
8	PR-315	Trap o-ring, intake
9	PR-4	Rubber foot and screw assembly – 1 per package (Prior to 2006)
10	PR-66	Angled intake tee with caps
11	NFT5-4	1/4" O-ring, cap
12	NFT5-6	3/8" O-ring, cap
	NFT5-8	1/2" O-ring, cap
14	PR-209	Plastic isolation valve handle and screw w/stem, o-rings and retainer
15	PR-208	Flexible coupler* 1-1/2"(Start of 1995) 2-1/2" (Prior to 12/1994)*
	PR-308	Flexible section only 7/8"; use w/PR-208 flexible coupler*
	PR-6	Flexible coupler* 2-1/4"
	PR-77	1-5/8" Middle section; use w/PR-6 flexible coupler*
16	PR-42	Motor foot w/screw (prior to 2006)
17	PR-59	Base foot
19	PR-31	Line cord (Marathon motor) old style
20	PR-54	Rocker switch w/wire leads (Emerson) models since 2004
21	PR-610	FLEX motor
	PR-206	1/2 Hp, 115v, 60 Hz Motor w/line cord and switch
	PR-207	1/2 Hp, 115/230v, 50/60 Hz Dual Voltage Motor (not shown)
23	PR-7	Gas ballast valve w/o-ring
24	P90009	O-ring, gas ballast valve
25	PR-40	Splash guard and screw (excludes 3 CFM manufactured before 1/01)

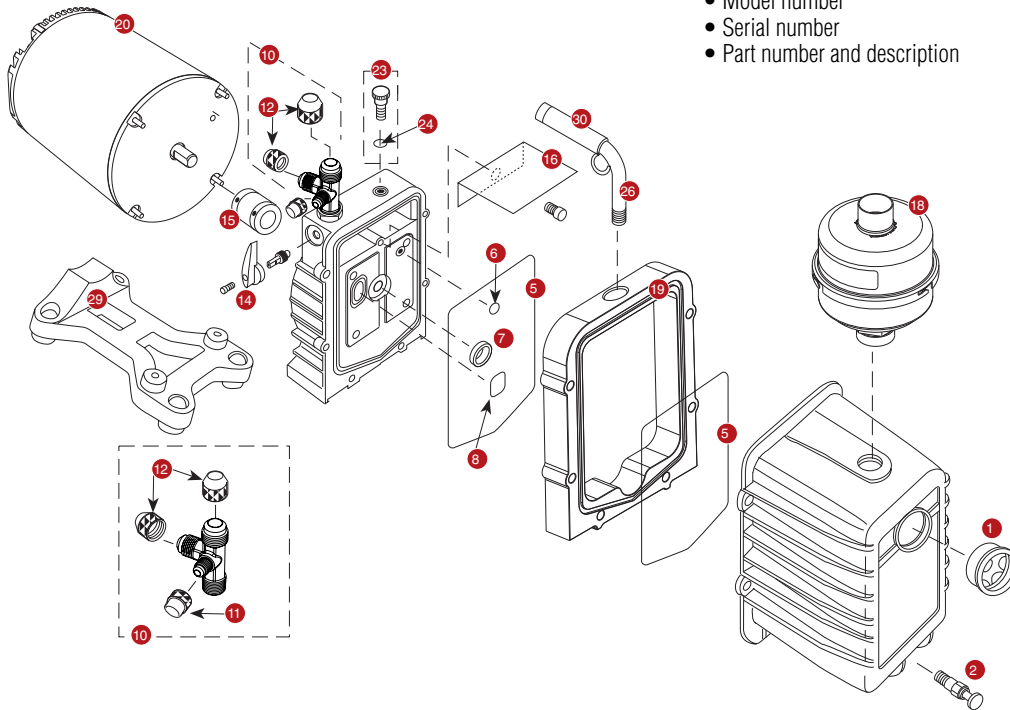
26	PR-75	Cushioned handle w/lift ring 1/2" NPT and DV-EP-8 as of 2008
	PR-205	Cushioned handle 3/8" NPT
	PR-605	Cushioned handle w/lift ring FLEX
27	PR-22	Oil fill plug w/o-ring
28	PR-56	Adapter nut w/nut o-ring
30	PR-500	Cushion and cap 3/8" NPT
	PR-501	Cushion and cap 1/2" NPT
	PR-601	Cushion and cap FLEX
31	DV-EP6	Tethered safety cap 3/8" NPT (prior to 2008)
	DV-EP8	Tethered safety cap 1/2" NPT
PLATINUM® SERIES REPAIR PARTS – MANUFACTURED AFTER JANUARY 2001		
REF.NO.	PART NO.	DESCRIPTION
3	PR-300	DV-42N through DV-200N cover assembly w/sight glass and drain valve
	PR-301	DV-285N Cover assembly w/sight glass and drain valve
4	PR-302	DV-42N and DV-85N Cartridge w/o-rings and cover seal
	PR-303	DV-142N Cartridge w/o-rings and cover seal
	PR-304	DV-200N Cartridge w/o-rings and cover seal
	PR-314	DV-285N Cartridge w/o-rings and cover seal
5	PR-311	Cover seal
13	PR-32	1/4" Intake w/cap
29	PR-62	Pump base (includes feet); fits all pumps with serial #0101 and higher
PLATINUM® SERIES REPAIR PARTS – MANUFACTURED BEFORE JANUARY 2001		
5	PR-217	Cover seal
8	PR-215	Trap o-ring, intake
PLATINUM® SERIES REPAIR PARTS – NOT SHOWN		
PR-18	Cartridge valve repair kit (includes DV-285N as of 2007 models)	
PR-52	DV-285N Cartridge valve repair kit (prior to 2007 models)	
PR-45	Pump repair kit PR-1, PR-59 (4), PR-42, PR-208	

Emerson® is a registered trademark of US Motors. Marathon® is a registered trademark of Marathon Electric.
* Coat with thread sealant when replacing.

PLATINUM® BEAST DC Vacuum Pump Repair: DV-340N

Repair parts can be ordered from your local JB wholesaler. When ordering please provide the following information:

- Model number
- Serial number
- Part number and description



PLATINUM® BEAST REPAIR PARTS		
REF. NO.	PART NO.	DESCRIPTION
1	PR-1	Sight glass
2	PR-2	Drain valve
6	PR-211	Trap o-ring, gas ballast
7	PR-3	Shaft seal
8	PR-315	Trap o-ring, intake
10	PR-78	Angled intake tee with caps
11	NFT5-4	1/4" O-ring, cap
12	NFT5-6	3/8" O-ring, cap
	NFT5-8	1/2" O-ring, cap
14	PR-209	Plastic isolation valve handle and screw w/stem, o-rings and retainer
15	PR-208	Flexible coupler* 1-1/2"(Start of 1995) 2-1/2" (Prior to 12/1994)*
	PR-308	Flexible section only 7/8"; use w/PR-208 flexible coupler*
16	PR-41	Splash Guard
17	PR-59	Base
18	PR-307	Oil Mist Filter
19	PR-306	Spacer with handle and cushion
20	PR-608	Motor
23	PR-7	Gas ballast valve w/o-ring
24	P90009	O-ring, gas ballast valve

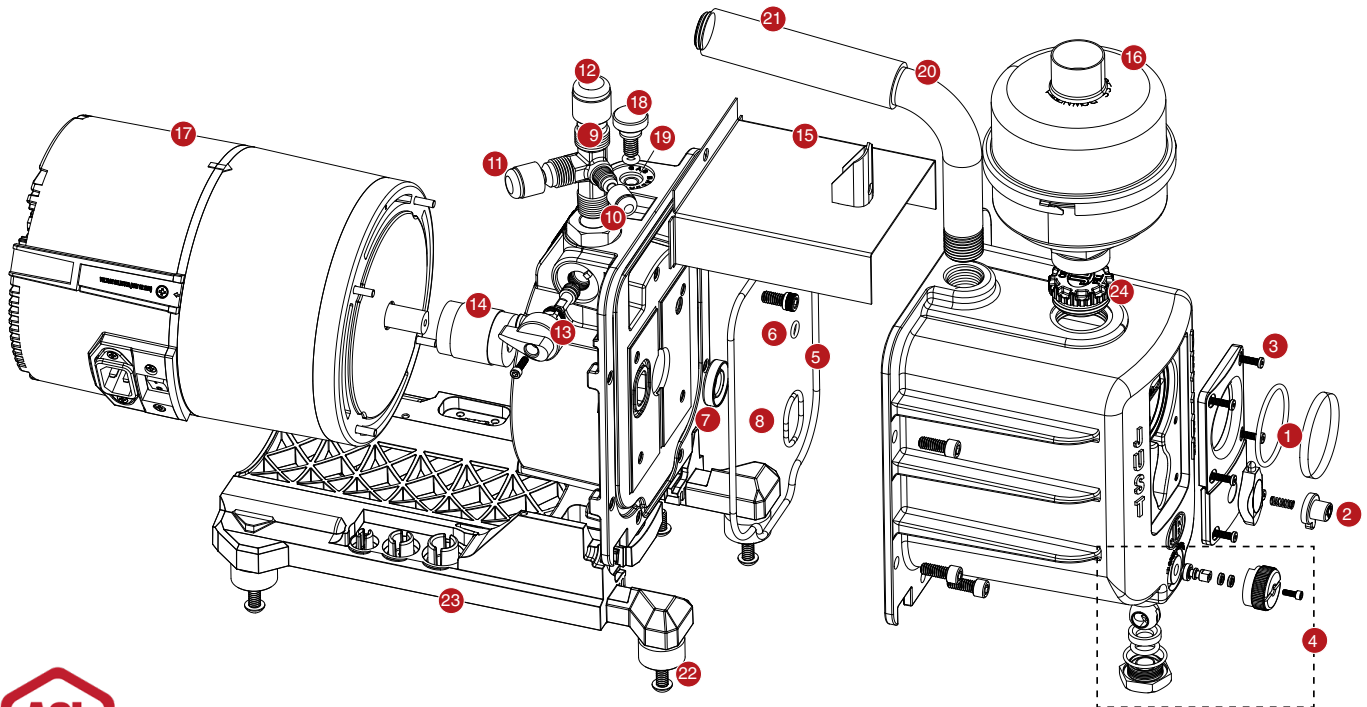
PLATINUM® BEAST REPAIR PARTS		
REF. NO.	PART NO.	DESCRIPTION
26	PR-75	Cushioned handle w/lift ring 1/2" NPT
27	PR-22	Oil fill plug w/o-ring
28	PR-56	Adapter nut w/nut o-ring
30	PR-501	Cushion and cap 1/2" NPT
3	PR-301	DV-285N Cover assembly w/sight glass and drain valve
5	PR-311	Cover seal
29	PR-62	Pump base (includes feet); fits all pumps with serial #0101 and higher
PLATINUM® BEAST REPAIR PARTS – NOT SHOWN		
PR-45	Pump repair kit PR-1, PR-59 (4), PR-2, PR-208	

* Coat with thread sealant when replacing.

PLATINUM® PRO DC Vacuum Pump Repair: DV-240DC and DV-285DC

Repair parts can be ordered from your local JB wholesaler. When ordering please provide the following information:

- Model number
- Serial number
- Part number and description



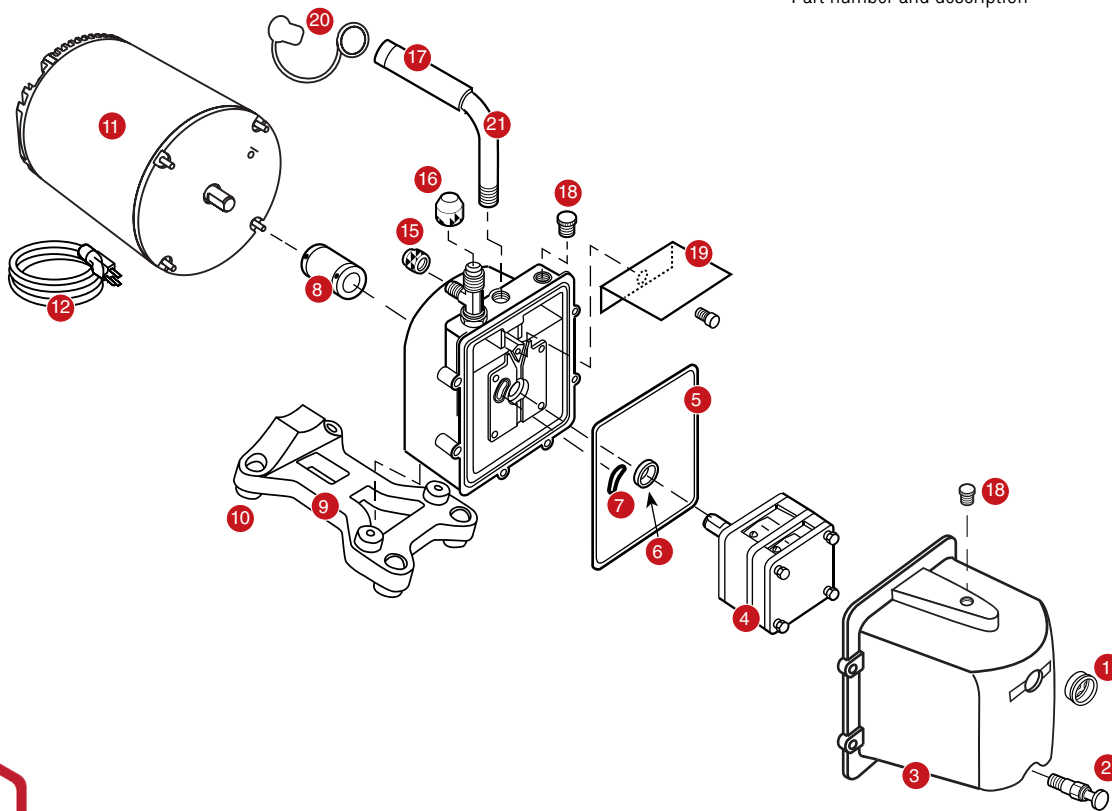
PLATINUM® PRO REPAIR PARTS		
REF.NO.	PART NO.	DESCRIPTION
1	PR-801	Sight glass with o-ring
2	PR-805	Light and button
3	PR-806	Light cover screw
4	PR-807	Oil drain repair kit
5	PR-811	Cover seal
6	PR-211	Trap o-ring, gas ballast
7	PR-3	Shaft seal
8	PR-315	Trap o-ring, intake
9	PR-78	Angled intake tee with caps
10	NFT5-4	1/4" O-ring, cap
11	NFT5-6	3/8" O-ring, cap
12	NFT5-8	1/2" O-ring, cap

PLATINUM® PRO REPAIR PARTS		
REF.NO.	PART NO.	DESCRIPTION
13	PR-209	Plastic isolation valve handle and screw w/stem, o-rings and retainer
14	PR-208	Flexible coupler
15	PR-840	Splash guard with piercing valve
16	PR-307	Oil mist filter
17	PR-607	Motor
18	PR-7	Gas ballast valve w/o-ring
19	P90009	O-ring, gas ballast valve
20	PR-75	Cushioned handle w/lift ring 1/2" NPT
21	PR-501	Cushion and cap 1/2" NPT
22	PR-4	Rubber feet assembly
23	PR-862	Pump base with feet
24	PR-822	Oil fill cap for DV-240DC

ELIMINATOR® DC Vacuum Pump Repair: DV-6EDC

Repair parts can be ordered from your local JB wholesaler. When ordering please provide the following information:

- Model number
- Serial number
- Part number and description



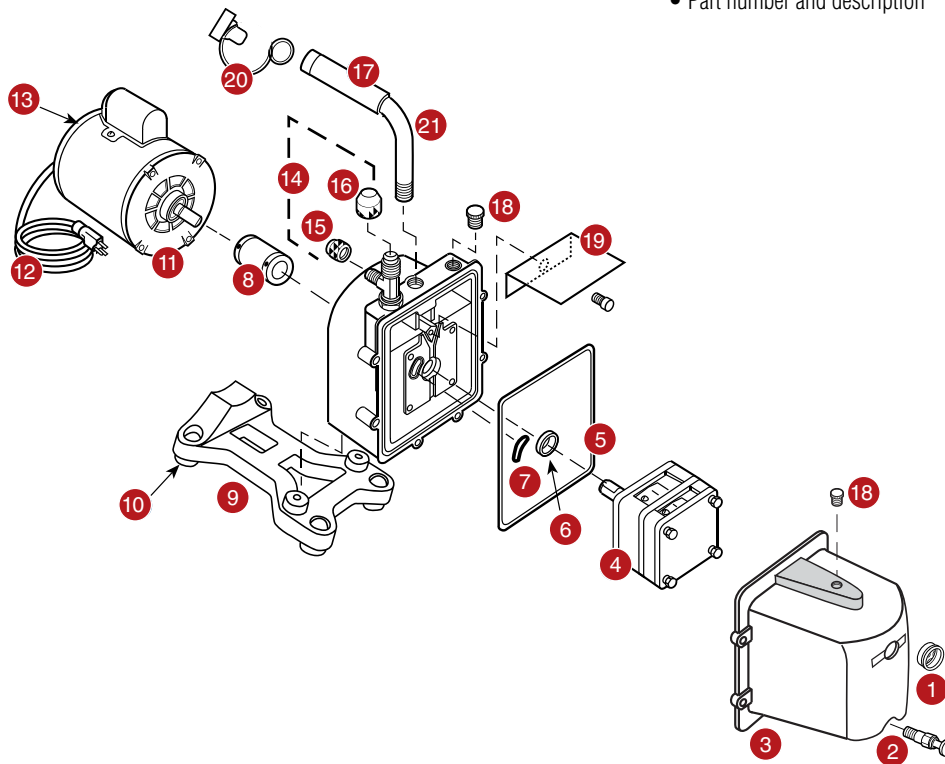
ELIMINATOR 6EDC REPAIR PARTS		
REF.NO.	PART NO.	DESCRIPTION
1	PR-1	Sight glass
2	PR-2	Oil drain valve
3	PR-10	DV-3E, DV-4E and DV-6E cover assembly w/sight glass, drain valve and oil fill plug
4	PR-406	DV-6E Cartridge complete w/o-rings and cover seal
5	PR-217	Cover seal
6	PR-3	Shaft seal
7	PR-315	Trap intake o-ring
8	PR-208	2-1/2" Flexible coupler*
9	PR-62	Pump base w/rubber feet and screws (4)
10	PR-59	Rubber pump foot (1)

ELIMINATOR 6EDC REPAIR PARTS		
REF.NO.	PART NO.	DESCRIPTION
11	PR-607	DC Motor
12	PR-49	IEC 10 ft. locking cord
14	PR-63	Intake tee w/cap
15	NFT5-4	1/4" O-ring cap
16	NFT5-6	3/8" O-ring cap
17	PR-501	1/2" Rubber grip and cap
18	PR-22	Oil fill plug w/o-ring
19	PR-40	Stainless steel splash guard w/screw
20	DV-EP8	1/2" Red tethered safety exhaust cap
21	PR-205	3/8" Cushioned handle
	PR-65	1/2" Cushioned handle

ELIMINATOR® AC Vacuum Pump Repair: DV-3E, DV-4E and DV-6E Series

Repair parts can be ordered from your local JB wholesaler. When ordering, please provide the following information:

- Model number
- Serial number
- Part number and description



Current chrome cover will fit older black ELIMINATOR models

ELIMINATOR SERIES REPAIR PARTS		
REF.NO.	PART NO.	DESCRIPTION
1	PR-1	Sight glass
2	PR-2	Oil drain valve
3	PR-10	DV-3E, DV-4E and DV-6E cover assembly w/sight glass, drain valve and oil fill plug
4	PR-403	DV-3E Cartridge complete w/o-rings and cover seal
	PR-404	DV-4E Cartridge complete w/o-rings and cover seal
	PR-406	DV-6E Cartridge complete w/o-rings and cover seal
5	PR-217	Cover seal
6	PR-3	Shaft seal
7	PR-315	Trap intake o-ring
8	PR-208	1-1/2" Flexible coupler*
	PR-308	7/8" Middle section; used w/PR-208 2-1/2" Flexible coupler*
	PR-6	2-1/4" Flexible coupler*
	PR-77	1-5/8" Middle section; used w/PR-6 flexible coupler*
9	PR-62	Pump base w/rubber feet and screws (4)
10	PR-59	Rubber pump foot (1)
Not Shown	PR-18	Cartridge valve repair kit

ELIMINATOR SERIES REPAIR PARTS		
REF.NO.	PART NO.	DESCRIPTION
11	PR-206	1/2 HP, 115v/60Hz motor w/line cord and switch
	PR-207	1/2 HP, 115/230v, 50/60Hz dual voltage motor w/line cord and switch (not shown)
12	PR-31	6' Line cord (Emerson® motor)
13	PR-54	Rocker-switch 115v Emerson Motor (wire leads)
14	PR-63	Intake tee w/cap
15	NFT5-4	1/4" O-ring cap
16	NFT5-6	3/8" O-ring cap
17	PR-500	3/8" Rubber grip and cap
	PR-501	1/2" Rubber grip and cap
18	PR-22	Oil fill plug w/o-ring
19	PR-40	Stainless steel splash guard w/screw
20	DV-EP6	3/8" Red tethered safety exhaust cap
	DV-EP8	1/2" Red tethered safety exhaust cap
21	PR-205	3/8" Cushioned handle
	PR-65	1/2" Cushioned handle

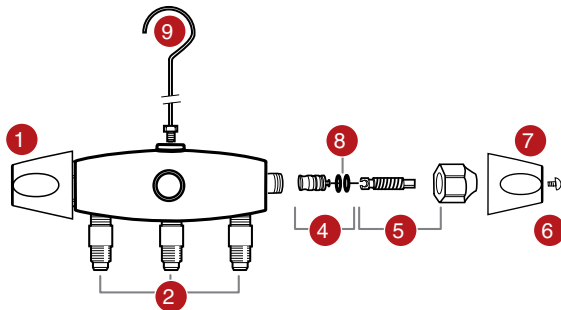
Emerson® is a registered trademark of US Motors. Marathon® is a registered trademark of Marathon Electric.
* Coat with thread sealant when replacing.

Manifold Rebuild Kits:

- Rebuild kits are available for all manifold series
- Standard rebuild kits include a stem, nut, piston with seat and o-rings
- Premium rebuild kits feature two standard kits plus two handwheels and screws
- Caution: gauges and hoses not specified for R410A can damage tools and cause injury

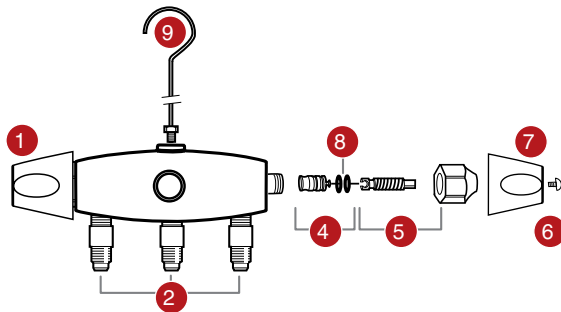
MANIFOLD REBUILD KITS	
PART NO.	DESCRIPTION
M2R-S	Standard M2 rebuild (also fits M5 through M9 series)
M2R-P	Premium M2 rebuild (fits M2 series only)
M4R-S	Standard M4 rebuild
M4R-P	Premium M4 rebuild
2VZR-S	Standard ZEPPELIN 2-valve rebuild (fits both aluminum and brass)
2VZR-P	Premium ZEPPELIN 2-valve rebuild (fits both aluminum and brass)
4VZR-S	Standard ZEPPELIN 4-valve rebuild
4VZR-P	Premium ZEPPELIN 4-valve rebuild
M2-106	1/8" FPT Gauge mounting brackets
M2-108	1/4" FPT Gauge mounting brackets

ZEPPELIN® Brass Series



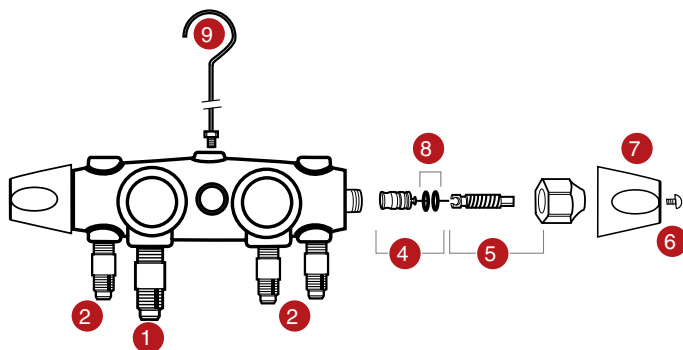
ZEPPELIN BRASS SERIES MANIFOLD		
REF.NO.	PART NO.	DESCRIPTION
1	MR-601	Handwheel and screw
2	U1-4A	1/4" Intake
4	MR-505	1/4" Manifold piston
5	MR-516	Stem and nut
6	MR-601	Handwheel and screw
7	MR-503	Handwheel screws (2)
8	MR-509	O-rings (2)
9	M2-102N	Hanging hook

ZEPPELIN® 2-Valve Aluminum Series



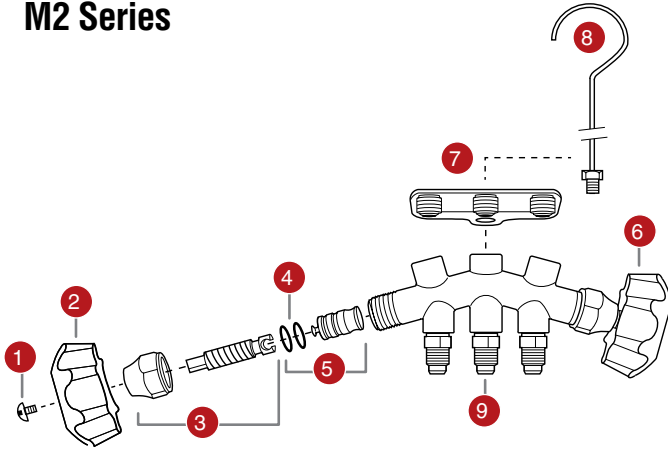
ZEPPELIN 2-VALVE ALUMINUM		
REF.NO.	PART NO.	DESCRIPTION
1	MR-601	Handwheel and screw
2	U1-4A	1/4" Intake
4	MR-505	Piston w/seat and o-rings
5	MR-516	Stem and nut
6	MR-601	Handwheel and screw
7	MR-503	Handwheel screws (two)
8	MR-509	O-rings (two)
9	M2-102N	Hanging hook

ZEPPELIN® 4-Valve Aluminum Series



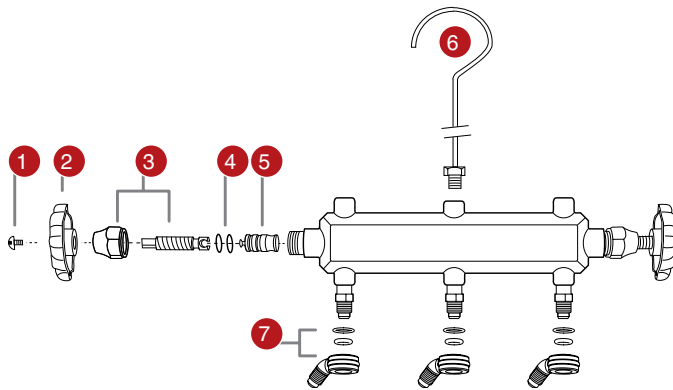
ZEPPELIN 4-VALVE ALUMINUM		
REF.NO.	PART NO.	DESCRIPTION
1	U1-6B	3/8" Intake
2	U1-4A	1/4" Intake
4	MR-605	Piston w/seat and o-rings
5	MR-607	Stem and nut
6	MR-601	Handwheel and screw
7	MR-503	Handwheel screws (2)
8	MR-409	O-rings (2)
9	M2-102N	Hanging hook

M2 Series



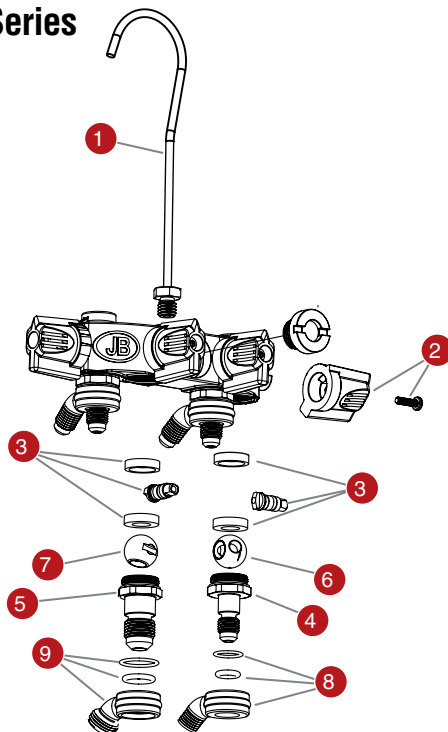
M2 SERIES MANIFOLDS		
REF. NO.	PART NO.	DESCRIPTION
1	MR-503	Handwheel screw (2)
2	MR-501B	Blue handwheel and screw
3	MR-516	Stem and nut
4	MR-509	O-ring (2)
5	MR-505	Piston w/seat and o-rings
6	MR-501R	Red handwheel
7	M2-300	Hose holder 1/4"
8	M2-102N	Hanging hook
9	U1-4A	Intake

PATRIOT™ 2-Valve Brass Series



PATRIOT SERIES MANIFOLDS		
REF. NO.	PART NO.	DESCRIPTION
1	MR-503	Handwheel screw (2)
2	MR-508	Metal handwheel and screw
3	MR-516	Stem and nut
4	MR-509	O-ring (2)
5	MR-505	Piston w/seat and o-rings
6	M2-102N	Hanging hook
7	MR-504	1/4" Hose holder sleeve and o-rings

REVOLVER® Series



REVOLVER 4-VALVE BALL SERIES MANIFOLD		
REF. NO.	PART NO.	DESCRIPTION
1	M2-102N	Hanging hook
2	MR-502	Handle and screw
3	MR-BVK	Ball valve kit including: seals (2), stem (1), o-rings (2) and washer (1)
4	MR-444	1/4" Retainer fitting
5	MR-446	3/8" Retainer fitting
6	MR-611	Throttle ball
7	MR-610	Ball
8	MR-504	1/4" Hose holder sleeve and o-rings
9	MR-506	3/8" Hose holder sleeve and o-rings

O-Rings/Gaskets

• Made in the USA 



P90009



P90010



P90012



P90016



A10974

PART NO.	QTY.	DESCRIPTION
A10974	1	O-ring/Gasket Removal Tool
A10974-BX	12	O-ring/Gasket Removal Tool Display Box NEW
P325	2	1/4" and 5/16" replacement gaskets for A32525N (1 each)
P509	6	1/4" Gasket for quick couplers, gasket caps (6 pack)
P509-25	25	1/4" Gasket for quick couplers, gasket caps (25 pack)
P510	6	1/4" CLA Series R134a gasket (6 pack)
P511	6	Gasket for 1/4" CLE, CLV, CLBV Series hose (6 pack)
P511-10	10	Gasket for 1/4" CLE, CLV, CLBV Series hose (10 pack)
P90008	5	Gasket for 1/2" heavy-duty black charging hose (5 pack)
P90009	10	1/4" O-ring for couplers, vacuum pumps and flexible metal hose (10 pack)
P90010	5	1/4" O-ring for access valves and liquid charging adapters, 1/4" caps (5 pack)
P90011	5	5/16" O-ring for liquid charging adapters (5 pack)
P90012	10	3/8" O-ring for couplers, vacuum pumps and flexible metal hose (10 pack)
P90016	10	Gasket for 3/8" hose (10 pack)
P90022	10	O-ring for T21295 and 33112RK (10 pack)
P90513	5	1/4" Spring type clip depressor for coupler; used with P509 (5 pack)
P90514	5	1/4" Depressor for CLE, CLV and CLBV Series used with P511 (5 pack)



P90513



P509



P90514



P511



A10974-BX

Hose Replacement Parts

• Made in the USA 



33112RK

CLSX-RH

A10974

T21295

PART NO.	DESCRIPTION
A10974	O-ring/Gasket Removal Tool
33112RK	1/4" Secure Seal Rebuild Kit
33115RK	5/16" Secure Seal Rebuild Kit
CLSX-RK	CLSX Secure Seal Rebuild Kit
CLSX-RH	CLSX Replacement Head
T21295	Snap Ring Pliers for CLS Secure Seal Fittings, Includes 33112RK 1/4" Rebuild Kit
P90022	O-ring for T21295 and 33112RK (10 pack)
P511	Gasket for 1/4" CLE, CLV, CLBV Series Hose (6 pack)
P90514	1/4" Depressor for CLE, CLV and CLBV Series (5 pack) used with P509
P90016	Gasket for 3/8" Hose (10 pack)
P90008	Gasket for 1/2" Heavy-duty Black Charging Hose (5 pack)

A2L Hose Adapters

Connect to A2L Cylinders with Reverse Thread Adapter End Hose



• Made in the USA 

PART NO.	DESCRIPTION
QC-A2L-LH	ADAPTER: 1/4" Female SAE flare left-handed x 1/4" Male flare to be used for A2L applications such as R454B/R32 tanks
QC-A2L-LH45	ADAPTER: 1/4" FE SAE flare left-handed x 1/4" Male flare 45°




QC-A2L-LH45



QC-A2L-LH

Secure Seal Adapters

• Convert your CLE Series hose into CLS Secure Seal

• Made in the USA 



33112N

33113N

PART NO.	DESCRIPTION
33112N	1/4" QC x 1/4" SAE
33113N	1/4" QC x 1/4" SAE 90°
33115N	5/16" QC x 1/4" SAE
33116N	5/16" QC x 1/4" SAE 90°

CLSX Series Hose Repair Instructions Easily Replace/Repair Head with Basic Tools

Replace Head CLSX-RH

1. Attach 3/8" wrench to the flats of the head base. Use an adjustable wrench on hex of the barb and turn counterclockwise to remove the head. Apply one to two drops of a standard thread sealant or Teflon tape to the pipe thread of the hose barb.



2. Attach new head and finger tighten turning clockwise. Use 3/8" wrench and adjustable wrench to fully tighten. Torque to 6ft/lbs (approximately 3/4 to 1-1/2 turns past finger tight).

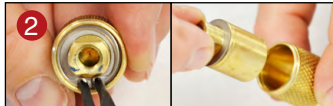


Rebuild Head CLSX-RK

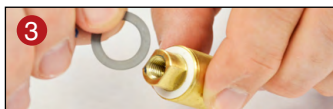
1. Attach 3/8" wrench to the flats of the head base. Use an adjustable wrench on hex of the barb and turn counterclockwise to remove the head.



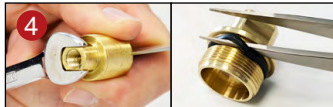
2. Use spring clip pliers to remove internal spring clip from inside of end cap assembly. Remove coupler nut exposing cup assembly.



3. Remove the metal and nylon thrust washers.



4. Stabilize slot at base of cup assembly with straight-edge and using a 3/8" wrench turn counterclockwise to detach end cap from cup assembly. Remove and replace end cap o-ring.



5. Remove and discard spring, depressor, and gasket from inside cup using pointed hook or removal tool.



6. Remove and replace o-ring from slotted end of cup.



7. Insert new gasket, depressor and spring in cup. Apply one to two drops of a standard thread sealant or Teflon tape to the pipe thread of the end cap. Reattach end cap with new o-ring to cup assembly using a 3/8" wrench and a straight edge.



8. Replace the metal and nylon thrust washers. Place cup assembly into coupler nut.

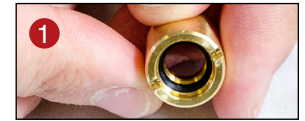


9. Use spring clip pliers to secure internal snap ring inside of end cap assembly. Refer to REPLACE HEAD Step 1 and 2 to reassemble.



CLS Series Hose Repair Instructions For use with 33112RK/33115RK Rebuild Kits

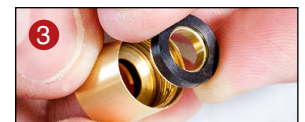
1. Hold the cup in one hand so that the slotted face of the cup is exposed. Pinch the cup seal o-ring and insert it into the large groove to seat it correctly as shown.



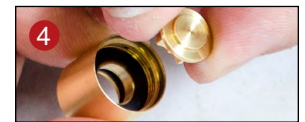
2. Install the barb seal o-ring in the groove located between the hex feature and the back portion of thread. Gently stretch and pull it over the threads of the barb fitting. Ensure the seal is not torn or damaged.



3. Insert bushing/seal into the thread side of the cup. Brass bushing side goes in first with seal facing up as shown.



4. Insert depressor with three-blade feature into the cup assembly. The depressor fits into the bushing/seal installed in the previous step. The depressor must sit flat and true to the seal surface.



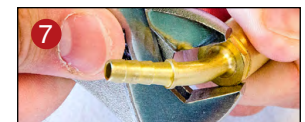
5. Place spring into cup assembly over the emboss on the back of the depressor.



6. Screw cup assembly, with spring in an upward position, onto hose barb fitting. Hand tighten the cup to the barb ensuring cup seats over the barb gasket (o-ring) and does not damage the o-ring.



7. Tighten the cup and hose barb using a 9/16" open-end wrench and 1/16" steel blade. Do not over tighten—only 25 to 30 in/lbs is required.



8. Insert barb/cup assembly into the coupler. Seat the thrust washer flat onto the hose barb and inside the coupler. Install the internal snap ring and seat it into the groove of the coupler.



For additional information on assembly or disassembly, refer to 33112RK or 33115RK Rebuild Kit Instructions online at JBIND.COM.